

ISM9 Scientific Preliminary Programme



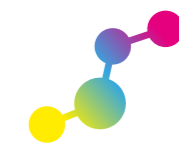
Human Health



Environmental Health



Emerging Enabling
Technologies



Regeneration &
Sustainability

Monday
June 17

9.00 - **Multi-Modal (Imaging)**
12.00 Workshop 1
LMF Waterloo FWB

12.00 - **Lunch Break**
13.00

13.00 - **Multi-Modal (Data Analysis)**
15.30 Workshop 2
LMF Waterloo FWB

14.00 - **Registration & Poster Setup**
17.00 Bush House

17.00 - **ISM9 Opening Remarks**
17.30

17.30 - **Plenary Speaker**
18.20 Prof. Hongzhe Sun
University of Hong Kong,
Hong Kong

18.30 - **Welcome Drinks & Reception**
20.00 8th Floor Bush House

ISM9 Scientific Preliminary Programme



Human Health



Environmental Health



Emerging Enabling
Technologies



Regeneration &
Sustainability

AM
Tuesday
June 18

08.00 - 09.00	Registration, Poster setup and Coffee		
9.00 - 9.50	Plenary Speaker Dr. Mak Saito Woods Hole Oceanographic Institution, USA		
10.00 - 10.25	Health & Disease 1 – Keynote	Biogeochemical Cycles 1 – Keynote	
10.25 - 10.40	Health & Disease 1 – Talk 1	Biogeochemical Cycles 1 – Talk 1	
10.40 - 10.55	Health & Disease 1 – Talk 2	Biogeochemical Cycles 1 – Talk 2	
10.55 - 11.10	Health & Disease 1 – Talk 3	Biogeochemical Cycles 1 – Talk 3	
11.20 - 11.45	Coffee Break / Exhibition		
11.45 - 12.10		Metal Ecotoxicology & Homeostasis 1 – Keynote	Transformative Tech & Method Development 1 – Keynote
12.10 - 12.25		Metal Ecotoxicology & Homeostasis 1 – Talk 1	Transformative Tech & Method Development 1 – Talk 1
12.25 - 12.40		Metal Ecotoxicology & Homeostasis 1 – Talk 2	Transformative Tech & Method Development 1 – Talk 2
12.40 - 12.55		Metal Ecotoxicology & Homeostasis 1 – Talk 3	Transformative Tech & Method Development 1 – Talk 3

ISM9 Scientific Preliminary Programme



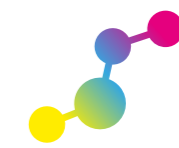
Human Health



Environmental Health



Emerging Enabling
Technologies



Regeneration &
Sustainability

PM
Tuesday
June 18

13.05 - 14.30	Lunch Break / Exhibition		
14.30 - 14.55			Theoretical & Applied Bioinorganic Chem 1 – Keynote
14.55 - 15.10			Theoretical & Applied Bioinorganic Chem 1 – Talk 1
15.10 - 15.25			Theoretical & Applied Bioinorganic Chem 1 – Talk 2
15.25 - 15.40			Theoretical & Applied Bioinorganic Chem 1 – Talk 3
15.40 - 16.25	Coffee Break / Exhibition		
16.25 - 16.50	Diagnostics & Therapeutics 1 – Keynote	Metal Biorecovery & Remediation 1 – Keynote	Biotechnology 1 – Keynote
16.50 - 17.05	Diagnostics & Therapeutics 1 – Talk 1	Metal Biorecovery & Remediation 1 – Talk 1	Biotechnology 1 – Talk 1
17.05 - 17.20	Diagnostics & Therapeutics 1 – Talk 2	Metal Biorecovery & Remediation 2 – Talk 2	Biotechnology 1 – Talk 3
17.20 - 17.40	Diagnostics & Therapeutics 1 – Talk 3	Metal Biorecovery & Remediation 1 – Talk 3	Biotechnology 1 – Talk 3
17.45 - 18.30	Flash Poster Presentations		
19.00 - 22.30	Between the Bridges Bash Queen's Walk on the South Bank		

ISM9 Scientific Preliminary Programme



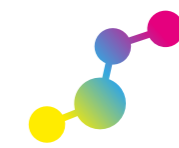
Human Health



Environmental Health



**Emerging Enabling
Technologies**



**Regeneration &
Sustainability**

AM
Wednesday
June 19

08.00 - 09.00	Coffee		
9.00 - 9.50	Plenary Speaker Prof. Ute Kraemer Ruhr University Bochum, Germany		
10.00 - 10.25	Diagnostics & Therapeutics 2 – Keynote	Metal Ecotoxicology & Homeostasis 2 – Keynote	
10.25 - 10.40	Diagnostics & Therapeutics 2 – Talk 1	Metal Ecotoxicology & Homeostasis 2 – Talk 1	
10.40 - 10.55	Diagnostics & Therapeutics 2 – Talk 2	Metal Ecotoxicology & Homeostasis 2 – Talk 2	
10.55 - 11.10	Diagnostics & Therapeutics 2 – Talk 3	Metal Ecotoxicology & Homeostasis 2 – Talk 3	
11.20 - 11.45	Coffee Break / Exhibition		
11.45 - 12.10		Biogeochemical Cycles 2 – Keynote	Transformative Tech & Method Development 2 – Keynote
12.10 - 12.25		Biogeochemical Cycles 2 – Talk 1	Transformative Tech & Method Development 2 – Talk 1
12.25 - 12.40		Biogeochemical Cycles 2 – Talk 2	Transformative Tech & Method Development 2 – Talk 2
12.40 - 12.55		Biogeochemical Cycles 2 – Talk 3	Transformative Tech & Method Development 2 – Talk 3

ISM9 Scientific Preliminary Programme



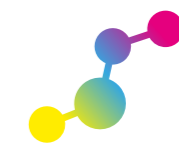
Human Health



Environmental Health



Emerging Enabling
Technologies



Regeneration &
Sustainability

PM
Wednesday
June 19

13.05 - 14.30
Lunch Break / Exhibition

13.30 - 14.15
Roundtable 1

14.30 - 14.55
Health & Disease 2
– Keynote

**Theoretical & Applied
Bioinorganic Chem 2**
– Keynote

14.55 - 15.10
Health & Disease 2
– Talk 1

**Theoretical & Applied
Bioinorganic Chem 2**
– Talk 1

15.10 - 15.25
Health & Disease 2
– Talk 2

**Theoretical & Applied
Bioinorganic Chem 2**
– Talk 2

15.25 - 15.40
Health & Disease 2
– Talk 3

**Theoretical & Applied
Bioinorganic Chem 2**
– Talk 3

15.40 - 15.55
Health & Disease 2
– Talk 4

**Theoretical & Applied
Bioinorganic Chem 2**
– Talk 4

16.00 - 17.00
**Poster Session (odd number)
/ Coffee Break**

17.00 - 18.00
**1. Social Science Seminar
2. Open Collaboration Time**

18.30 - 22.00
Lincoln's Inn Gala Dinner
Lincoln's Inn Fields

ISM9 Scientific Preliminary Programme



Human Health



Environmental Health



Emerging Enabling
Technologies



Regeneration &
Sustainability

AM
Thursday
June 20

08.00 - 09.00	ISM9 International Committee Meeting / Coffee		
9.00 - 9.50	Plenary Speaker Prof. Lousie Horsfall University of Edinburgh, Scotland		
10.00 - 10.25	Public & Occupational Health 1 – Keynote		Circular Economy 1 – Keynote
10.25 - 10.40	Public & Occupational Health 1 – Talks 1		Circular Economy 1 – Talk 1
10.40 - 10.55	Public & Occupational Health 1 – Talks 2		Circular Economy 1 – Talk 2
10.55 - 11.10	Public & Occupational Health 1 – Talks 3		Circular Economy 1 – Talk 3
11.20 - 11.45	Coffee Break / Exhibition		
11.45 - 12.10		Metal Biorecovery & Remediation 2 – Keynote	Biotechnology 2 – Keynote
12.10 - 12.25		Metal Biorecovery & Remediation 2 – Talk 1	Biotechnology 2 – Talk 1
12.25 - 12.40		Metal Biorecovery & Remediation 2 – Talk 2	Biotechnology 2 – Talk 2
12.40 - 12.55		Metal Biorecovery & Remediation 2 – Talk 3	Biotechnology 2 – Talk 3

ISM9 Scientific Preliminary Programme



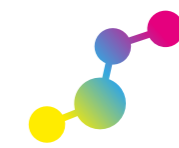
Human Health



Environmental Health



Emerging Enabling Technologies



Regeneration & Sustainability

PM
Thursday
June 20

13.05 - 14.30
Lunch Break / Exhibition

13.30 - 14.15
ECR Networking Event

14.30 - 14.55

Transformative Tech & Method Development 3
– Keynote

Energy & Transport 1
– Keynote

14.55 - 15.10

Transformative Tech & Method Development 3
– Talk 1

Energy & Transport 1
– Talk 1

15.10 - 15.25

Transformative Tech & Method Development 3
– Talk 2

Energy & Transport 1
– Talk 2

15.25 - 15.40

Transformative Tech & Method Development 3
– Talk 3

Energy & Transport 1
– Talk 3

15.40 - 15.55

Transformative Tech & Method Development 3
– Talk 4

Energy & Transport 1
– Talk 4

16.00 - 17.00
Poster Session (even number) / Coffee Break

17.00 - 18.00
1. Roundtable with Guest Speaker
2. Open Collaboration Time

18.30 - 23.00
Student Pint Of Science
Pub Party
The Tattershall Castle

ISM9 Scientific Preliminary Programme



Human Health



Environmental Health



Emerging Enabling
Technologies



Regeneration &
Sustainability

Friday
June 21

08.00 - 09.00	Coffee		
9.00 - 9.50	Plenary Speaker Prof. Pernilla Wittung Stafshede Chalmers University of Technology, Sweden		
10.00 - 10.25	Health & Disease 3 – Keynote		Circular Economy 2 – Keynote
10.25 - 10.40	Health & Disease 3 – Talks 1		Circular Economy 2 – Talk 1
10.40 - 10.55	Health & Disease 3 – Talks 2		Circular Economy 2 – Talk 2
10.55 - 11.10	Health & Disease 3 – Talks 3		Circular Economy 2 – Talk 3
11.20 - 11.45	Coffee Break / Exhibition		
11.45 - 12.15	Roundtable Future of Metallomics with Funders & Journals		
12.15 - 12.45	Awards, Prizes & ISM9 Closing Remarks		
13.30 - 15.30	London Metallomics Facility & PET Tours Waterloo Campus & St. Thomas' Hospital		